

# International workshop on the Danger Model

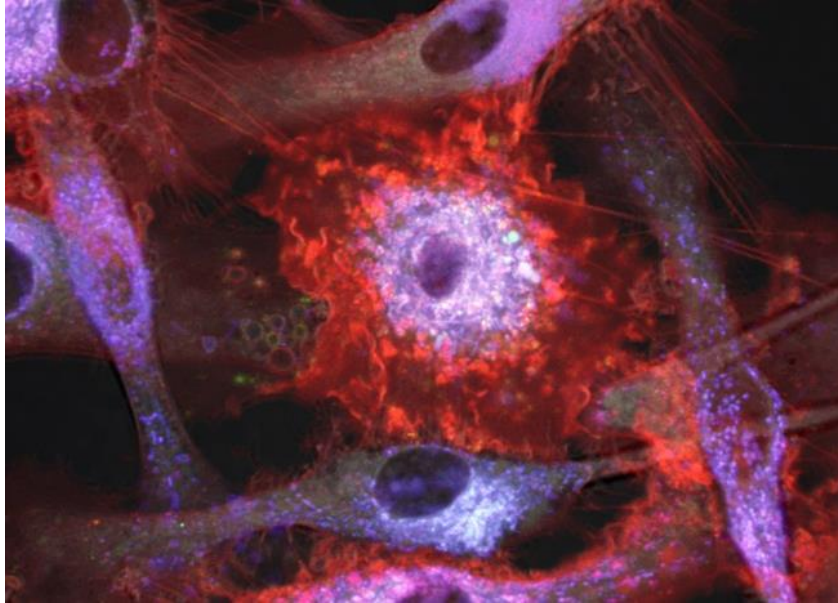


Photo by Ole J. B. Landsverk

Oslo, Norway, 22-23 June, 2017



Meeting's organizer: The Norwegian Society for Immunology (NSI)

<http://norwegianimmunology.org>; [www.facebook.com/norwegianimmunology](http://www.facebook.com/norwegianimmunology)

Free entrance, everybody is welcome!

Limited number of seats: please sign up at

<http://norwegianimmunology.org/meetings/nsi-events/>

We are grateful to our sponsors:





## 1<sup>st</sup> Day – Thursday, June 22, 2017

**Venue:** Rikshospitalet, Store Auditorium, Sognsvannsveien 20, Oslo

**Chair:** Alexandre Corthay, Oslo University Hospital, NSI president

### Session 1 Introduction to the Danger Model

- 09.00: **Opening**  
Alexandre Corthay, Oslo University Hospital, NSI president
- 09.10: **Danger and tolerance: transplants, pregnancy and tumors**  
Polly Matzinger, National Institutes of Health (NIH), Bethesda, USA
- 09.55: **Discussion**
- 10.25: **Coffee break**
- 10.55: **Immunogenic cell death**  
Inger Øynebråten, Oslo University Hospital
- 11.25: **Discussion**
- 11.40: **Transplantation immunology**  
Einar Martin Aandahl, Oslo University Hospital
- 12.10: **Discussion**
- 12.25: **Lunch break with wraps**

### Session 2 Other models for T cell activation and tolerance (part 1)

- 13.30: **The Development-Context Model: putting danger in context**  
Colin C. Anderson, University of Alberta, Edmonton, Canada
- 14.15: **Discussion**
- 14.30: **Lymphocyte cooperation initiates immune responses: a contemporary assessment**  
Peter Bretscher, University of Saskatchewan, Canada
- 15.15: **Discussion**
- 15.30: **Coffee break**

### Session 3 Autoimmunity

- 16.00: **Autoimmunity from a Danger point of view**  
Polly Matzinger, NIH, Bethesda, USA
- 16.45: **Discussion**
- 17.15: **Triggers and drivers of autoimmunity**  
Ludvig Sollid, University of Oslo
- 18.00-18:30: **Discussion**
- 19.00-22:00: **Pizza and beers (free discussion)**



## 2<sup>nd</sup> Day – Friday, June 23, 2017

**Venue:** Store Auditorium, Rikshospitalet, Sognsvannsveien 20, Oslo

**Chair:** Alexandre Corthay, Oslo University Hospital, NSI president

### Session 4 The Danger Model and Cancer

09.00: **NK cell recognition of stressed self**  
Marit Inngjerdengen, Oslo University Hospital

09.30: **Discussion**

09.45: **The danger model, self-nonsel discrimination and cancer**  
Alexandre Corthay, Oslo University Hospital

10.30: **Discussion**

10.45: **Coffee break**

### Session 5 Other models for T cell activation and tolerance (part 2)

11.15: **On integrity in immunity**  
Zlatko Dembic, University of Oslo

12.00: **Discussion**

12.15: **Lunch break with wraps**

13.15: **Idiotype-driven T-B collaboration and its pathogenic potential**  
Bjarne Bogen, University of Oslo

14.00: **Discussion**

### Session 6 Danger signals

14.15: **IL-33 - cytokine of dual function or novel alarmin?**  
Olav Sundnes, Oslo University Hospital

14.45: **Discussion**

15.00: **Dual Blockade of Inflammation - targeting the complement system and the TLR co-receptor CD14 in acute inflammatory disease.**  
Per Nilsson and Søren Pischke, University of Oslo

15.30: **Discussion**

15.45: **Coffee break**

### Session 7 Immune Class Regulation

16.15: **Quantitation and Immune Class Regulation: The Threshold Hypothesis**  
Peter Bretscher, University of Saskatchewan, Canada

17.00: **Discussion**

17.15: **Class control: the other side of tolerance**  
Polly Matzinger, NIH, Bethesda, USA

18.00-19:00: **Discussion**

19.30: **Dinner**